

# INSTRUCTION FOR CEILING FAN REMOTE CONTROL

## Yukiharu®

Model number: CLFC-01

### FCC WARNING

Warning: Changes or modifications to this unit not expressly approved by the party responsible for compliance could void the user's authority to operate the equipment.

### FCC STATEMENT

**NOTE:** This equipment has been tested and found to comply with the limits for a Class B digital device, pursuant to Part 15 of the FCC Rules. These limits are designed to provide reasonable protection against harmful interference in a residential installation. This equipment generates, uses and can radiate radio frequency energy and, if not installed and used in accordance with the instructions, may cause harmful interference to radio communications.

However, there is no guarantee that interference will not occur in a particular installation. If this equipment does cause harmful interference to radio reception, it can be determined by turning the equipment off and on, the user is encouraged to correct the interference by one or more of the following measures:

- ☐ Reorient or relocate the receiving antenna.
- ☐ Increase the separation between the equipment and receiver.
- ☐ Connect the equipment into an outlet on a circuit different from that to which the receiver is connected.
- ☐ Consult the dealer or an experienced radio/TV technician for help.

## ATTENTION

1. Make sure the circuit breaker had been turned off before installation.
2. Electrical installation should be performed by a qualified licensed electrician.
3. Spliced conductors should be turned upward and pushed carefully up into the outlet box.

## SPECIFICATION

Model	Input Voltage	Max Fan Power	Max Light Power	Timing Speed
CLFC-01	100-240V/60HZ	145W	LED:150W Incandescent:500W	1H/2H/4H/8H H / M / L

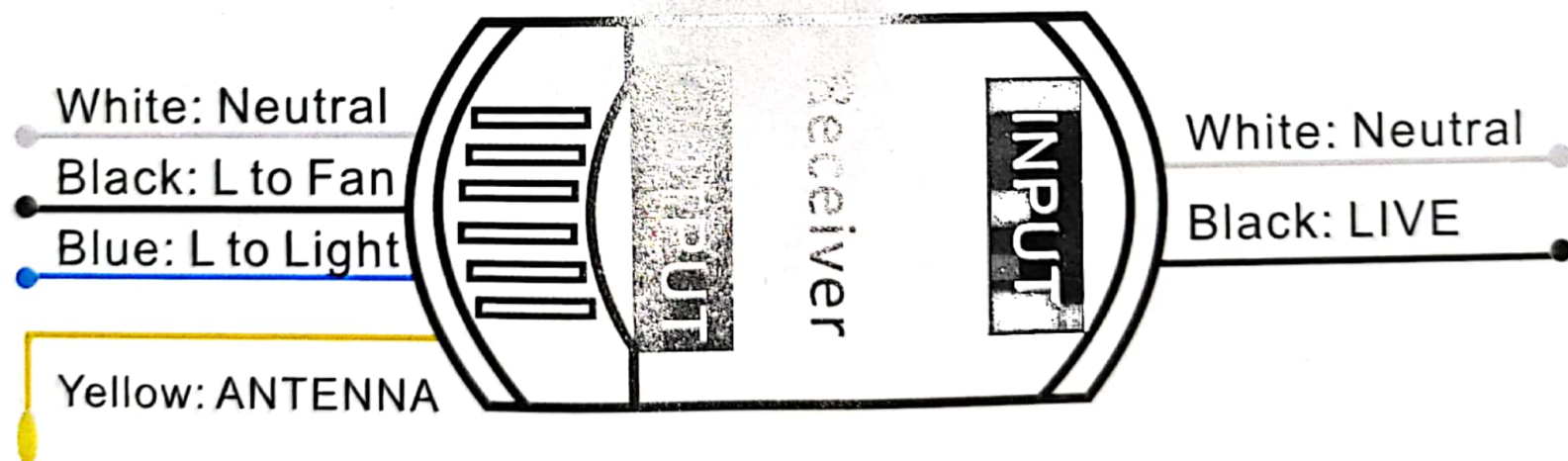
\* 4 Timing: 1H/2H/4H/8H

\* 3 Speed: high / med / low and stop.

\* Wireless Transmission: RF 433MHZ.

\* The 'BEEP' can be turned ON/OFF through remote, Please find the instruction in next page.

## WIRING SCHEMATIC DIAGRAM FOR RECEIVER



Wires from ceiling:  
White: Neutral Line  
Black: Live Line

**Main Power**

Antenna must be put  
outside of the canopy,  
Don't broken the  
antenna surface

Wires from fan motor:  
White: Neutral Line  
Black: Live to Fan  
Blue : Live to Light

Yellow: ANTENNA

## INSTALLATION STEPS

- 1, Disconnect power to fan at the circuit breaker.
- 2, Connect the wires.
- 3, Reinstall fan base so that wire connections are not exposed.
- 4, Reconnect circuit breaker, You will hear a short sound 'BI' from receiver, the lamp will turn on automatically.
- 5, Pressing a fan speed button will active the fan.



## IMPORTANT TIPS

- 1, After installation, Power on from the wall switch, 'Beep' from receiver, then the light turn on automatically, But the Fan will not spin. Pressing a fan speed button will active the fan.
- 2, Turn on or turn off 'BEEP' function: Press and hold 'STOP' button until the light in remote goes out, Default setting is 'Beep ON'.
- 3, Please keep the antenna in yellow wire outside the canopy. Only in this way, the receiver can get the signal from remote.
- 4, Please connect your wires correctly. Usually, there are 3 wires from your fan motor with BLUE/BLACK/WHITE. Contact seller if the colors or number of wires don't match your fan motor.
- 5, If your fan motor has a separate capacitor, please keep it, do not remove away.

## HOW TO CHECK YOUR CEILING FAN REMOTE KIT STEP BY STEP

### STEP 1: Connect the wires correctly.

- A, The inputs and outputs of the receiver must not be connected backwards, otherwise, The receiver will be destroyed immediately.
- B, Before connection, Please check the wires. Usually, there are 3 wires from your fan motor with BLUE/BLACK/WHITE. Connect WHITE to WHITE, BLUE to BLUE, BLACK to BLACK.

### STEP 2: Do you hear a short 'BEEP' from receiver when you power on your ceiling fan?

YES: The receiver is good, and can work successfully.

NO: The receiver is failed, please check your wire connections.

The correct action: Power on, 'BEEP' from receiver, then the lamp light on automatically. Fan will not spin. Pressing a fan speed button in remote will active the fan.

**STEP 3: Does the indicator in remote light on when you press any button?**

YES: Remote working well.

NO: Check battery, also check the battery case, the battery contacts maybe not a good connection for some battery brands. Try to rotate the battery to get good contact.

**STEP 4: Do you hear a short 'BEEP' from receiver when you press any button in remote?**

YES: The signal between receiver and remote is correct.

NO: Please keep the ANTENNA in yellow wire outside the canopy in order to get good signal from remote. Please make sure that the wire surface of antenna is not broken.

**STEP 5: Re-pair the signal between remote and receiver if the kits can not work well. Please find the re-pair steps in below.**

## Q & A

**Q: I have 2 ceiling fans in adjacent rooms. If I buy 2 of these remote controls, will they interfere with each other?**

No, each remote and receiver kit had been paired before delivery. It means that 1 remote can only control 1 ceiling fan in default setting, it works individually. Not require selecting pin codes in multi-fans application thanks for the advanced RF technology.

**Q: Can i use 1 remote to control 2 fans?**

Yes, after special setting (re-pair the signal between 1 remote and several receivers), you can use 1 remote to control multi-fans. Please note that 1 remote can only control 1 fan in default setting.

### Re-pair steps:

STEP 1: Prepare 1 remote and several receivers. Connect wires to one receiver, Power on.

STEP 2: Push and hold 'stop' + '8H' buttons at same time until the indicator in remote lights down.

STEP 3: Push 'light on/off' button quickly several times in order to write the signal into the receiver.

STEP 4: Re-pair finished.

STEP 5: Repeat step 1 to 4, use the same remote to re-pair with several receivers one by one.

NOTE: The re-pair steps should be finished in 60 seconds after the receiver powered on.



## NOTICE

1. Pay attention: The inputs and outputs of the receiver must not be connected backwards. Otherwise, it will be destroyed immediately.
2. If your fan have PULL CHAINS switch, Please switch the PULL CHAINS, turn the fan speed to maximum and turn on the light. Only in this way, you can get all the remote functions, and get max speed when you press 'high' speed button, turn on/off the light when you press 'light on/off' button.
3. The receiver have no REVERSE function.
4. The receiver have no-dimming function.
5. Press each button in remote to check whether there is any response from receiver. The receiver will 'BEEP' every time when you press any button. If there is no feedback, please contact seller for technical support. However, if you turn off the 'BEEP' through remote, the receiver will never 'BEEP'.
6. If the remote can not work, please check:
  - a. Does your fan have power?
  - b. If you have pull chain switch, are there in correct position?
  - c. Did you install the receiver correctly?
  - d. Does the battery in remote have enough power and well contacted?
  - e. Are there any other wireless-controlled products with same frequency working nearby? They will disturb each other if they are working in very close distance.
7. Please remove away the batteries if the remote will stop working for a long time.
8. Please connect your ceiling fan case to ground with correctly, otherwise the light maybe flick in some conditions.
9. Please take care of the ANTENNA during your installation.

Please keep the Antenna outside the canopy, and do not broken the surface of the wire. otherwise, the antenna will short with the canopy, and your fan can not be controlled in remote any more.

## HOW TO CONTROL THE CEILING FAN THROUGH APP AND VOICE

# YukiHalu®

### Instruction for WIFI version

Work With:



Smart Life



amazon alexa



Google Assistant

### IMPORTANT TIPS

- 1, This device only support 2.4G WI-FI network. Please make sure your WI-FI is 2.4G, do not choose 5G.
- 2, Make sure your smart phone and WIFI fans are in the range of WIFI signal.
- 3, Please note that the networking pairing must be completed within 5 minutes after the receiver get the power, otherwise, please turn off power for 10 second and then restart power, try to connect again.

### How to connect the fan to APP

**STEP 1: Install the receiver (with black box) to ceiling fan** according the installation guide. Test the connections by remote firstly. If the fan can be controlled by remote successfully, go to next step. otherwise, please check the wire connections.

**STEP 2: Download and login in "Smart Life" APP**

- 2.1: Download and Install "Smart Life" APP. This APP support iOS and Android.
- 2.2: Tap "Register an account" in "Smart Life" APP or use your existing account.
- 2.3: Login in the APP.



## How to connect the fan to amazon Alexa?

**STEP 1:** Complete network configuration in "Smart Life" APP , make sure the fan is in APP's "device list"

**STEP 2:** Re-name each device individually in "Smart Life", the names are usually in English and should be easily recognize by voice assistant device. Fan and light should be named individually, such as "living fan", "arm light", so that the fan and light can be controlled by voice individually.

### **STEP 3: Configure the Amazon Echo device**

(If you have already configured Amazon Echo, you can skip this step. The following instructions are based on iOS client)

1. Make sure your Amazon Echo device is powered on and connected to a Wi-Fi network.
2. Open the Alexa app on your phone. After successful login, tap on the menu in the upper left corner of the Home page, select "Settings" and tap "Set Up A New Device" to set up the Amazon Echo.
3. Choose your Amazon Echo device type and language for connecting. Press and hold the small dot on the device until the light turns yellow. Then tap "Continue" to connect to the hotspot. After connecting to Amazon Echo hotspot, return to the page. At this point, the connection is successful. Tap "Continue" to proceed to the next step. Choose a Wi-Fi network to connect to. Amazon Echo will take a few minutes to try to connect to the network.
4. After the network connection is successful, Tap "Continue." An introduction video will appear. After the video ends, Tap "Continue" to jump to the Alexa Home page. You have now completed the Amazon Echo's configuration process.

### **STEP 4: Key step - link Skill** **KEY STEP**

1. Tap on "Skills" in the Alexa app menu.
2. Then search for "Smart Life". Tap "Enable" to enable the Skill.
3. Enter the Smart Life APP account and password, then tap "Link Now" to complete the account linking.
4. After successfully account linking, ask Alexa to discover devices. After around 20 seconds, alexa will show all the discovered devices. Now you can control your smart fan and light via alexa.
- 5, Back to Menu, and then tap "Smart Home". You can group your devices for different categories.



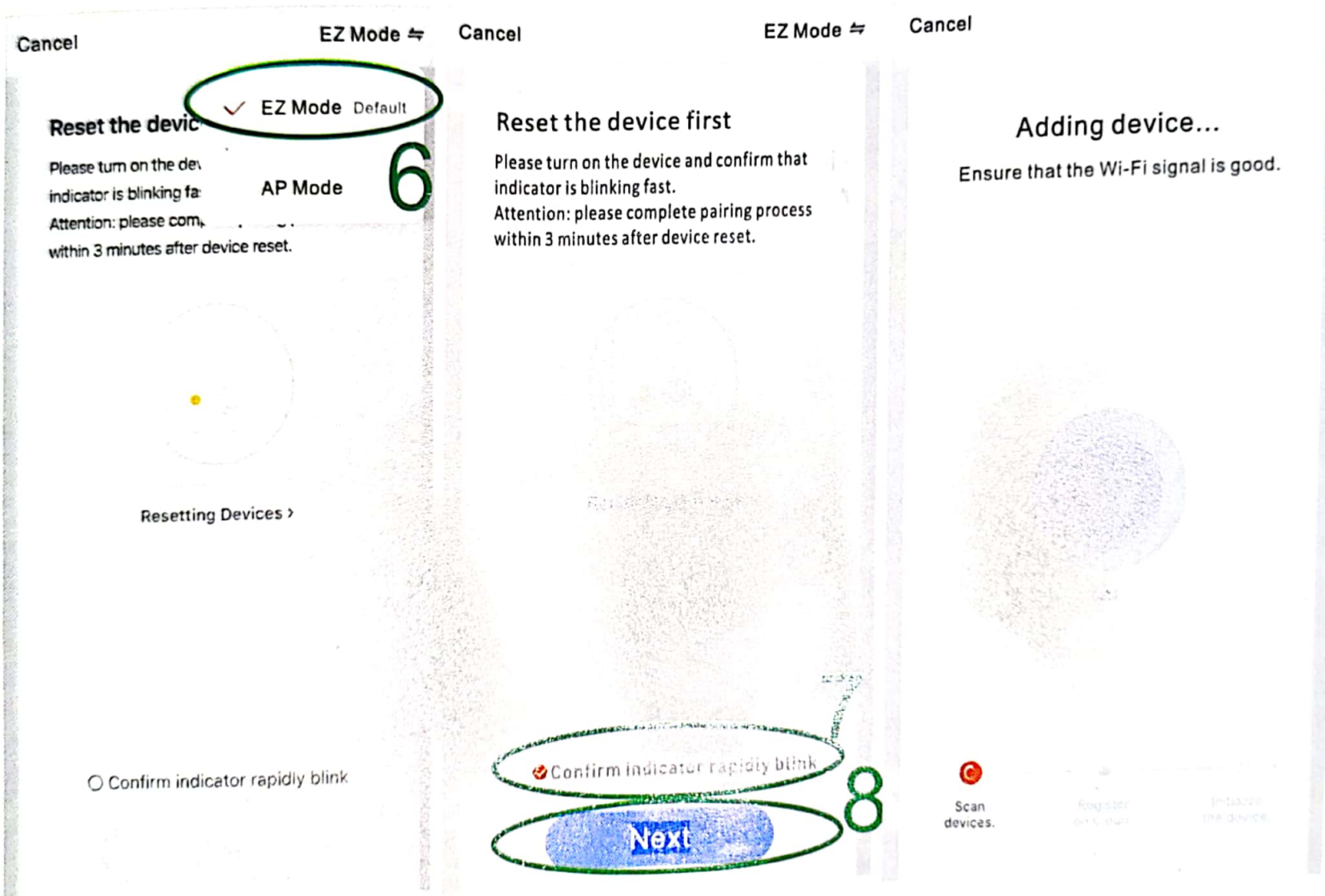
### 3.2 There are 2 network pairing modes: EZ and AP **KEY STEP**

#### 3.2.1, "EZ mode" (Default mode)

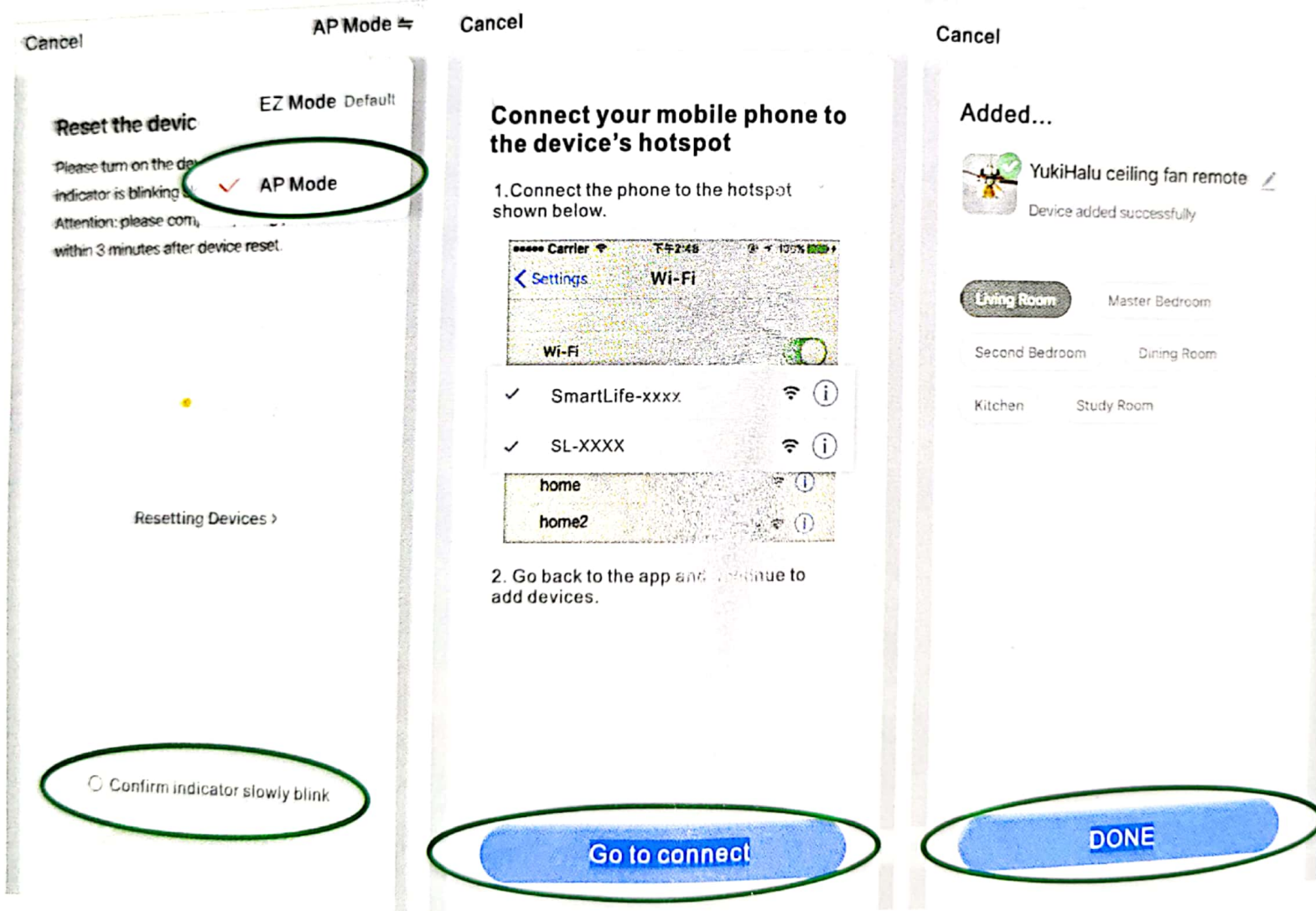
A, Turn on the ceiling fan power. Press and hold "8H" button in remote for more than 6 seconds. You will hear "B... [redacted] ..." from receiver. Wait for 6~12 seconds and then next step.

B, Select "EZ Mode" in the top right corner of page

C, Tap "Confirm indicator rapidly blink", and tap "Next"



- 3.2.2 If you failed to connect fan to APP with default mode, please try to select "AP mode"**
- A, Turn on the ceiling fan power. Press and hold "2H" button in remote for more than 6 seconds. You will hear "B.....BB.....BB.....BB....." from receiver. Wait for 6~12 seconds and then next step.
- B, Tap "AP mode" on the top right corner.
- C, Tap "Confirm indicator slowly blink", then tap "Go to connect".
- D, Open WIFI setting on your phone, select " SmartLife-xxx" network
- E, Go back to APP and continue to add the device, then wait for the connection to complete.
- STEP 4: Adding device, please wait for connection. Tap " DONE" once connection finished.**





Re-name the ceiling fan



Fan ON/OFF

Light ON/OFF

Re-name the light

**Note:** Timing is active only when the fan is running.

Beep ON/OFF  
Timing setting

## Troubleshooting and FAQ

### 1, Can't connect to APP?

- A, Check the pairing mode is correct or not. If you press and hold "8H" button in remote, please choose "EZ Mode" in APP. If you press and hold "2H" button, please choose "AP Mode" in APP.
- B, Please note that the networking pairing must be completed within 3 minutes after the receiver get the power, otherwise, please turn off the fan for 10 second and then turn on, try to connect again.
- C, If your router is 2.4Ghz & 5Ghz dual-band, the 2.4Ghz band may not be turned on. Please enter the router settings to turn on the 2.4Ghz band. You can check the router's manual or contact the router's official support for help.
- D, Make sure you entered the correct WIFI password.

### 2, Can't connect to ALEXA

- A, Check whether the alexa APP is correctly configured with the account of Smart Life APP.
- B, Check whether the fan is in the 'device list' of Smart Life APP.

### 3, The fan shows wrong status on the APP

The network may be delayed or the signal is weak. Please move the router closer to the fan or power off the router and then on. If it still doesn't work, try to re-configure and re-connect again.

## Control the device by voice commands

For example:

the fan name is "living fan", the light name is "arm light"

**Alexa, turn on/off arm light**

**Alexa, turn on/off living fan**

**Alexa, set living fan speed to min**

**Alexa, set living fan speed to max**

**Alexa, increase living fan speed**

**Alexa, decrease living fan speed**